



The 19th Top Chess Engine Championship: TCEC19

Guy Haworth¹ and Nelson Hernandez
Reading, UK and Maryland, USA

After some intriguing bonus matches in TCEC Season 18, the TCEC Season 19 Championship started on August 6th, 2020 (Haworth and Hernandez, 2020a/b; TCEC, 2020a/b). The league structure was unaltered except that the Qualification League was extended to 12 engines at the last moment. There were two promotions and demotions throughout. A key question was whether or not the much discussed *NNUE*, easily updated neural network, technology (Cong, 2020) would make an appearance as part of a new *STOCKFISH* version. This would, after all, be a radical change to the architecture of the most successful TCEC Grand Champion of all.



Fig. 1. The logos for the engines originally in the Qualification League and in Leagues 3 and 2.

The platform for the ‘Shannon AB’ engines was as for TCEC18, courtesy of ‘noobpwnftw’, the major sponsor, four Intel (2016) Xeon E5-4669v4 processors: LINUX, 88 cores, 176 process threads and 128GiB of RAM with the sub-7-man Syzygy ‘EGT’ endgame tables in their own 1TB RAM. The TCEC GPU server was a 2.5GHz Intel Xeon Platinum 8163 CPU providing 32 threads, 48GiB of RAM and four Nvidia (2019) V100 GPUs. It is not clear how many CPU threads each NN-engine used. The ‘EGT’ platform was less than on the CPU side: 500 GB of SSD fronted by a 128GiB RAM buffer.

¹ Corresponding author: g.haworth@reading.ac.uk

Table 1. The TCEC19 engines (CPW, 2020).

#	Engine		Initial			thr.	proto- col	Hash, MiB	EGTs	Authors	Final Tier	
	ab	Name	Version	Elo	Tier						→	←
01	A0l	A0lite	v0.1.1_BadGyal9_LittleEnder12p	2995	Q	?	uci	?	—	Dietrich Kappe	—	—
02	AS	AllieStein	v0.8-120f959_net-15.0	3536	P	?	uci	?	Syz.	Adam Treat and Mark Jordan	→	P
03	Ar	Arasan	22.1_7982ba9	3346	1	176	uci	16,384	Syz.	Jon Dart	↓	2
04	At	Asymptote	0.9-dev_20200804	3189	Q	176	uci	65,536	Syz.	Maximilian Lupke	→	Q
05	Ba	Bagatur	2.2	3094	Q	64	uci	?	Syz.	Krasimir Topchiyski	—	—
06	c22	chess22k	1.14	3262	Q	64	uci	8,192	—	Sander Maassen vd Brink	→	Q
07	CF	ChessFighter	3.5.1	3210	Q	?	uci	?	—	Alexander Lim	→	Q
08	Ch	Chiron	TCEC16	3269	2	176	uci	65,536	Syz.	Ubaldo Andrea Farina	→	2
09	Cm	Combusken	1.3.0-TCEC19	3190	Q	176	uci	65,536	Syz.	Marcin Bartkowlak	→	Q
10	Co	Counter	3.6dev2	3220	3	176	uci	65,536	—	Vadim Chizhov	↓	Q
11	De	Defenchess	2.3_dev2	3374	1	176	uci	65,536	Syz.	Can Cetin and Dogac Elden	→	1
12	Dm	Demolito	20200816	3281	2	176	uci	65,536	—	Lucas Braesch	→	2
13	Et	Ethereal	12.43	3470	P	176	uci	131,072	Syz.	Andrew Grant	↓	1
14	Fa	Fabchess	1.15	3213	Q	176	uci	65,536	—	Fabian von der Warth	→	Q
15	Fi	Fire	8_beta	3451	1	176	uci	65,536	Syz.	Norman Schmidt	↑↓	1
16	Fr	Fritz	17_20200130	3394	1	64	uci	65,536	Syz.	Frank Schneider	↓	2
17	Go	Gogobello	2.2	3228	3	176	uci	65,536	Syz.	Salvatore Giannotti	→	3
18	iC	iCE	4.0.853	3221	3	64	uci	8,192	—	Thomas Petzke	↓	Q
19	Ig	Igel	2.6.0	3333	3	176	uci	131,072	Syz.	Volodymyr Shcherbyna	↑↑	1
20	Ko	Komodo	2576.00	3505	P	88	uci	65,536	Syz.	Don Dailey, Larry Kaufman, Mark Lefler	→	P
21	Lc	LCZero	v0.26.2-rc1_J92-100	3543	P	2	uci	—	Syz.	UCT/NN AI Community	→	P
22	Ma	Marvin	4.0.0-a13	3257	3	176	uci	65,536	Syz.	Martin Danielsson	→	3
23	Mi	Minic	2.46	3276	3	176	uci	32,768	Syz.	Vivien Clauzon	→	3
24	Mo	Monolith	20200804	3250	Q	176	uci	65,536	Syz.	Jonas Mayr	→	Q
25	Ne	Nemorino	5.40	3254	2	176	uci	16,384	Syz.	Christian Günther	↓	3
26	Pe	Pedone	20200814	3334	2	176	uci	65,536	Syz.	Fabio Gobbato	→	2
27	Pi	Pirarucu	3.3.5	3206	3	176	uci	8,192	—	Raoni Campos	→	3
28	Rc	Roc	20200804	3299	Q	64	uci	16,384	Syz.	Tom Hyer	↑	3
29	rf	rofchade	2.306	3424	1	176	uci	65,536	Syz.	Ronald Friederich	↑	3
30	Ru	RubiChess	1.8	3362	2	176	uci	65,536	Syz.	Andreas Matthias	↑	1
31	Sc	ScorpioNN	3.0.8.3	3447	1	—	uci	—	—	Daniel Shawul	↑	P
32	Sl	SlowChess	Blitz Classic 2.25	3375	Q	176	uci	16,384	Syz.	Jonathan Kreuzer	↑↑↑	1
33	SF	Stockfish	202008260719_nn-82215d0fd0df	3553	P	172	uci	131,072	Syz.	Tord Romstad, Marco Costalba, Joona Kiiski, Gary Linscott	→	P
34	Sv	Stoofvlees II	a14	3504	P	12	uci	8,192	Syz.	Gian-Carlo Pascutto	→	P
35	To	Topple	0.7.5-20200605	3202	3	176	uci	65,536	Syz.	Vincent Tang	→	3
36	Tu	Tucano	8.28_dev_16GiB	3076	Q	176	uci	16,384	Syz.	Alcides Schulz	→	Q
37	Va	Vajole2	2.9.0-TCEC-S17	3306	2	176	uci	65,536	Syz.	Marco Belli	→	2
38	Wa	Wasp	13.50	3276	2	128	uci	16,384	Syz.	John Stanback	↓	3
39	We	Weiss	1.0-dev	2996	Q	176	uci	65,536	Syz.	Terje Kirsthagen	→	Q
40	Wi	Winter	0.8.4a	3355	2	176	uci	65,536	—	FM Jonathan Rosenthal	→	2
41	Xi	Xiphos	0.6.1	3426	1	176	uci	65,536	Syz.	Milos Tatarevic	→	1

1. THE QUALIFICATION LEAGUE: 12 ENGINES, 1 DRR, 132 GAMES @ 30'+5"/m

TCEC welcomed three new competitors this time: A0LITE, ROC and SLOWCHESS. A0lite, in contrast to LC0's thousands of lines of engine code, has an engine based on just 95 lines of PYTHON code. As such, it initiates an interesting experiment in rebuilding the core engine for NN MCTS/UCT competitors. CHESSBRAINVB's seasonal holiday led to COUNTER being readmitted to League 3.

The second author here provided 4-ply openings. After the first round robin, SLOWCHESS was in command on +7 with MONOLITH and ROC on +3. In game 18, COMBUSKEN-ASYMPTOTE, **53.f6??** handed Black a potential QP-rrp mate in 157 moves! Has a deeper position appeared on the board in TCEC or elsewhere? The opportunity was spurned with **54...Ra3??** where 54...R7a6 (or Ra4+) was needed. Black shuffled blindly on the a-file: the draw adjudication came swiftly.

In g65, TUCANO-CHESS22K, White won the pawn race, the initiative and the game, a surprising outlier-win. The TCEC 'win adjudication' pre-empted the subsequent 27-move mate. In g103/18.1, A0LITE-

ROC, White was three pawns up with opposite-colour bishops at position 75b: the game had clearly landed gently under parachute in the shared Chapter 5 territory of both Müller & Konoval (2018) and Dvoretzky (2020). Karsten Müller’s (2020) analysis: “**118.Ke4** missed the win which needed 118.Be7. After this it was drawn. White brings the bishop to the queenside, the king to the kingside and plays f5 to win.” FINALGEN (Romero, 2012) confirms that White had a win available.

In the end, SLOWCHESS was almost out of sight, unbeaten and scoring at least 75% against all other engines. It is particularly exciting to see an engine performing in this way, particularly a new entrant to TCEC and a revived experiment in computer chess. ROC finished clear second on +8 so we enjoyed the rare sight of debutante engines taking both the promotion places. ‘Wool’ (2020) usefully picked out games 12, 14, 23, 35-6, 38, 47, 59, 65 (see above), 75, 78 (a CHESS22K blunder), 80, 85, 88, 93, 103 (also above) and 125.

Table 2. The TCEC19 Qualification League cross-table.

#	Engine	Elo	Pts	X	P%	SB	Elo Δ	Sl	Rc	Cm	Mo	c22	CF	Fa	We	At	Tu	Ba	A01
01	SlowChess Blitz Classic 2.25	3375	19.0	0	86.4	191.00	+74		1=	1=	11	11	=1	=1	=1	=1	11	11	11
02	Roc 20200804	3299	15.0	0	68.2	142.75	+12	0=		00	1=	=	=1	=1	11	11	11	=1	1=
03	Combusken 1.3.0-TCEC19	3190	14.0	0	63.6	139.75	+86	0=	11		=	01	=	=	=1	=	1=	=1	11
04	Monolith 20200804	3250	13.5	0	61.4	125.75	+10	00	0=	=		=	1=	11	=1	=	11	1=	1=
05	chess22k 1.14	3262	12.0	0	54.5	111.75	-49	00	=	10	=		=	=	=	=	=1	0=	11
06	ChessFighter 3.5.1	3210	11.5	0	52.3	110.50	-14	=0	=0	=	0=	=		=	1=	=	1=	=1	=1
07	FabChess 1.15	3213	10.5	0	47.7	99.25	-49	=0	=0	=	00	=	=		=0	1=	1=	1=	1=
08	Weiss 1.0-dev	2996	10.0	0	45.5	90.00	+140	=0	00	=0	=0	=	0=	=1		0=	1=	11	=1
09	Asymptote 0.9-dev_20200804	3189	9.0	0	40.9	92.25	-73	=0	00	=	=	=0	=	0=	1=		=	=1	=0
10	Tucano 8.28_dev_16GiB	3076	7.5	0	34.1	65.00	-10	00	00	0=	00	1=	0=	0=	0=	=		=1	1=
11	Bagatur 2.2	3094	5.0	0	22.7	48.00	-107	00	=0	=0	0=	00	=0	0=	00	=0	=0		=1
12	A0lite v0.1.1_BadGyal9_LittleEnder12p	2995	5.0	0	22.7	50.00	-19	00	0=	00	0=	00	=0	0=	=0	=1	0=	=0	

2. LEAGUE 3: 10 ENGINES, 1 DRR, 2RRs, 90 GAMES @ 30'+5"/m

We had 8-ply openings for this league from Nelson’s ‘Book B’. After the first round robin, the still unbeaten dark horse debutant SLOWCHESS led with +3 but IGEL and MINIC were close behind on +2. No other engine was positive. IGEL’s win over MINIC in game 20 was to prove crucial as head-to-head results are the second tiebreaker. MARVIN and ROC advanced the schedule with a draw on move 12 in game 41. In Season 10 Stage 1, TEXEL-GULL similarly drew on move 9.

The second round robin did not change matters at the top. SLOWCHESS on +8 and IGEL on +5 remained unbeaten. And so we had a second promotion for SLOWCHESS, #8 on CCRL’s (2020) 40/15 rating list and maybe going all the way to the Premier Division. Forty unbeaten games is at least an encouraging indicator. MINIC was also on +5 but, as mentioned, had lost to IGEL which placed it third. The other promotee, ROC, was well clear of relegation but COUNTER’s reappearance in League 3 terminated. There were very few wins against what became the form book, the cross-table of Table 3. These ‘wins in the South West’ were both achieved by the aptly-named TOPPLE against fellow mid-fielders, see game 15 against PIRARUCU and game 73 against GOGOBELLO.

‘Wool’ (2020) highlighted games 7, 15, 20, 22, 27, 4, 46, 48, 85 and 88, some of which we mention above. These notes on how wins were achieved are an excellent introduction to some of the decisive games.

Table 3. The TCEC19 League 3 cross-table.

# Engine	Elo	Pts	X	P%	SB	Elo Δ	Sl	Ig	Mi	Pi	Go	Ma	To	Rc	Co	iC
01 SlowChess Blitz Classic 2.25	3418	13.0	0	72.2	106.50	+0	■	==	==	1=	==	=1	11	=1	=1	11
02 Igel 2.6.0	3333	11.5	0	63.9	96.75	+21	==	■	1=	==	==	=1	==	==	11	=1
03 Minic 2.46	3276	11.5	0	63.9	94.00	+71	==	0=	■	=1	==	=1	1=	==	1=	11
04 Pirarucu 3.3.5	3206	9.0	0	50.0	76.00	+53	0=	==	=0	■	1=	1=	0=	==	1=	==
05 Gogobello 2.2	3228	9.0	0	50.0	79.00	+34	==	==	==	0=	■	==	=0	=1	=1	==
06 Marvin 4.0.0-a13	3257	8.5	0	47.2	70.00	-8	=0	=0	=0	0=	==	■	1=	=1	==	=1
07 Topple 0.7.5-20200605	3202	8.5	0	47.2	70.25	+40	00	==	0=	1=	=1	0=	■	==	=1	==
08 Roc 20200804	3305	8.0	0	44.4	69.50	-67	=0	==	==	==	==	=0	==	■	==	=1
09 Counter 3.6dev2	3220	5.5	0	30.6	47.50	-71	=0	00	0=	0=	=0	==	=0	==	■	==
10 iCE 4.0.853	3221	5.5	0	30.6	46.00	-72	00	=0	00	==	==	=0	==	=0	==	■

3. LEAGUE 2: 10 ENGINES, 1 DRR, 2 RRs, 90 GAMES @ 30'+5"/m

This TCEC season continued with the same tempo, two round-robins and the same ‘SSS’ small sample size luck factor. The openings were arrayed by Eduardo Saucedo aka ‘Cookie Monster’ with background guidance from the second author here. They were variable-length openings, providing an extra degree of freedom. The two promotees provided the main interest from the start. SLOWCHESS was yet to concede. IGEL took advantage of the TCEC update rule, not to fix a bug or introduce some minor tweaks but to take on a completely new engine, one including the exciting technology du jour, NNUE. There are no penalties for doing so as in Formula One: even so, this was a brave move.

An indication that this might also be a very good move was game 12 when IGEL with Black beat SLOWCHESS in an 86-move thriller which was adjudicated in a QRNqrb endgame which could have shown us another ten interesting moves until the passed pawn won out.

IGEL on +10 and SLOWCHESS on +8 promoted *cum laude*, clear of RUBICHESS on +4: these were the only three engines in positive territory. SLOWCHESS was clearly good but IGEL had leapt past it in one NNUE-sprung bound like a blade-runner. In fact, RUBICHESS also promoted to fill the chair vacated by BOOOT as the latter had not fixed a crash problem as required.

NEMORINO and WASP (which crashed again) relegated to League 3. WASP exited in style, pulling off the outlier win of the event with Black in the last round against PEDONE, see game 86. Wool (2020) highlighted games 1, 8, 12, 28, 46, 51, 73 and 85-6 with clear notes, the three promotees very much to the fore.

Table 4. The TCEC19 League 2 cross-table.

# Engine	Elo	Pts	X	P%	SB	Elo Δ	Ig	Sl	Ru	Pe	Va	Wi	Ch	De	Wa	Ne
01 Igel 2.7.2-dev_nm-night-nurse1.5-dkappe	3353	14.0	0	77.78	116.75	+128	■	1=	10	11	11	=1	=1	1=	1=	1=
02 SlowChess Blitz Classic 2.26	3387	13.0	0	72.22	102.50	+66	0=	■	==	==	=1	11	1=	11	=1	11
03 RubiChess 1.8	3362	11.0	0	61.11	92.75	+24	01	==	■	01	==	==	=1	==	11	1=
04 Pedone 20200814	3334	8.5	0	47.22	71.25	-31	00	==	10	■	1=	==	==	==	=0	=1
05 Vajole2 2.9.0-TCEC-S17	3306	8.0	0	44.44	64.25	-21	00	=0	==	0=	■	01	11	10	==	==
06 Winter 0.8.4a	3355	8.0	0	44.44	65.25	-66	=0	00	==	==	10	■	==	0=	=1	1=
07 Chiron TCEC16	3269	7.0	0	38.89	59.50	-20	=0	0=	=0	==	00	==	■	=1	10	==
08 Demolito 20200816	3281	7.0	0	38.89	60.00	-31	0=	00	==	==	01	1=	=0	■	0=	==
09 Wasp 4.01	3276	7.0	1	38.89	59.00	-26	0=	=0	00	=1	==	=0	01	1=	■	=0
10 Nemorino 5.40	3254	6.5	0	36.11	53.25	-23	0=	00	0=	=0	==	0=	==	==	=1	■

4. LEAGUE 1: 10 ENGINES, 1 DRR, 2 RRs, 90 GAMES @ 45'+5"/m

For this slower-tempo league, Nelson this time combined his previous League 1 and Premier Division opening books in an effort to reduce the likely draw-percentage. As in League 2, SLOWCHESS and IGEL were of particular interest. Figure 2 provides the logos for the TCEC19 engines which had not yet played.

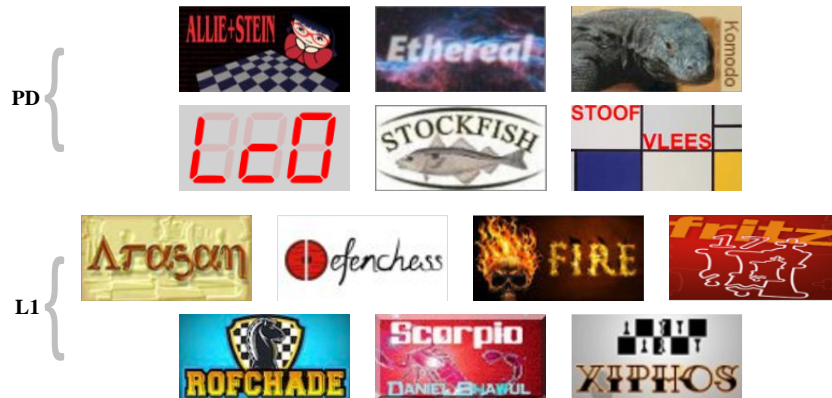


Fig. 2. The logos for the engines originally in League 1 and the Premier Division.

RUBICHESS, standing in for ‘in repair’ BOOOT, performed well in fact. XIPHOS had not been updated since November 2019 and so provided a benchmark as to the improving standard in this League.

Table 5. The TCEC19 League 1 cross-table.

#	Engine	Elo	Pts	X	P%	SB	Elo Δ	Fi	Sc	Sl	Xi	Ru	Ro	Ig	De	Fr	Ar
01	Fire 8_beta	3451	11.0	0	61.1	92.00	+29	■	=	=	=	1=	10	=	=	1=	11
02	ScorpioNN 3.0.8.3	3447	10.5	0	58.3	90.25	+17	=	■	10	=1	0=	=	=1	=	1=	1=
03	SlowChess Blitz Classic 2.26	3409	10.0	0	55.6	86.50	+35	=	01	■	=	=	=	=	1=	=	1=
04	Xiphos 0.6.1	3426	10.0	0	55.6	86.00	+20	=	=0	=	■	1=	=	=	1=	=	=1
05	RubiChess 1.8	3371	9.5	0	52.8	81.25	+54	0=	1=	=	0=	■	=	=	=	=1	=1
06	rofChade 2.306	3424	9.5	0	52.8	80.50	+6	01	=	=	=	=	■	0=	=	=	11
07	Igel 2.7.2-dev_nn-night-nurse1.5-dkappe	3486	9.0	0	50.0	80.50	-66	=	=0	=	=	=	1=	■	=	=	=
08	Defen chess 2.3_dev2	3374	8.5	0	47.2	73.75	+19	=	=	0=	0=	=	=	=	■	10	=1
09	Fritz 17_20200130	3394	7.5	0	41.7	67.00	-31	0=	0=	=	=	=0	=	=	01	■	=
10	Arasan 22.1_7982ba9	3346	4.5	0	25.0	40.75	-84	00	0=	0=	=0	=0	00	=	=0	=	■

After the first round-robin, the standings were FIRE +4, SCORPIONN/XIPHOS +2, SLOWCHESS/IGEL +1. RUBICHESS notably beat SCORPIONN in game 6/2.1, a game covered by ‘Wool’ (2020) who also touched on games 7, 24, 32 and 41.

Ultimately, FIRE and SCORPIONN promoted to the Premier Division where the real TV Money is - but not before FIRE lost to ROFCHADE in g55/11.5 and SCORPIONN lost to SLOWCHESS in g69/14.4. ‘Wool’ (2020) covered these games and games 50, 62 and 75. In fact, no engine went unbeaten. ARASAN and FRITZ were demoted to Division 2 but the other eight engines were tightly grouped in the scoring. There should be another close battle at this stage in TCEC Season 20 and hopefully, we will see the return of BOOOT.

5 THE PREMIER DIVISION: 8 ENGINES, 4 DRRs, 8 RRs, 224 GAMES @ 90'+5"/m

At this point as in TCEC18, the TCEC19 championship stepped into a different mode – a doubled time-budget and three times the round robins. Cato supplied 16-ply openings from his Premier Division book.

In fact, there was an administrative slip in proceedings, as surprising as it was rare these days: the operations side of TCEC had been looking more solid lately in Aloril's care. Nelson's opening book for TCEC19 League 1, the new combination of previous League 1 and Premier Division, was taken to be also the TCEC19 Premier Division opening book. This was discovered after some 19 games in the first round-robin and clearly, this first round-robin and its return games could not be discarded. The remedy adopted was to complete the first double round-robin, switch to the correct opening book after this, and add a fourth double round-robin to the event.²

As per the vibe in the chat room, STOCKFISH did in fact come to the start line in a new mode with the NNUE technology. We were wondering how this would change its playing style, so successful in the past. Only the STOCKFISH team knew whether it would be better in attack or defence, whether it would be more strategic and less tactical.

The answers slowly revealed themselves. Despite having four Whites in the first round, STOCKFISH failed to post a win, in itself a testament to the playing strength across the field. ALLIESTEIN and KOMODO got the upper hand but their chances were snuffed out by move 25. Spoiler alert: the draw-rate overall was a touch high, even ignoring the erroneously included 'Division 1' openings. The TCEC20 opening book will have added spice! Back to round 1: LEELA jumped to +2, the only positive score. STOOFVLEES beat KOMODO in game 4 but lost to ETHEREAL in game 6.

Had STOCKFISH lost some teeth? Not in fact. In the second round of 'return games', STOCKFISH racked up four wins to jump into the lead. ALLIESTEIN and STOOFVLEES took one step into positive territory while LEELA was in turn constrained to seven draws. STOCKFISH's win against ALLIESTEIN particularly drew the attention of GM Matthew Sadler (2019, 2020), featuring both 'excellent positional play' and 'a mind-boggling tactical sequence'. His beautifully written report illuminates the quality play of this season's Premier Division and Superfinal. We are of course extremely grateful once again for the richly informed perspective of this leading professional. Candidate Master 'Kingscrusher' (2020a-c), aka Tryfon Gavriel, and 'GMTheChessPuzzler' (2020) provided very welcome video-commentary on many decisive games.³ Wool (2020) gave notes on many decisive games. Now STOCKFISH led with +4 followed by LEELA with +2, STOOFVLEES/ALLIESTEIN on +1.

The third round proved to be LEELA's best with three wins. STOCKFISH also advanced with two more wins while ALLIESTEIN and STOOFVLEES stepped back to +0 again and looked unlikely to contend the two Superfinal spots. It was already clear that the other four engines would be in a desperate fight to the end to avoid relegation, see Fig. 3. We came to the half-way point with a quieter round 4 which did however include a win by KOMODO over STOOFVLEES in game 22.4/88. It was as if the dragon was awakening from its slumbers but of course, it was not.

² In the first double round-robin, KOMODO had the greatest chance by a very small margin. So in fact, there is little to be gained from, e.g., a 'greedy' algorithm explicitly allocating openings across mini-matches to balance intrinsic probabilities of decisive games. The genuinely 'Div P' openings with more opening bias were in games 4, 6, 9, 10, 15, 16, 19, 22 and 28 (and, add 28, their 'reverse games').

³ Across this Division, 'Kingscrusher' covered 19 games: 4, 9, 27, 38, 50, 56, 58, 65, 71, 78, 79, 111, 121, 131, 134, 167, 169, 176 and 187. 'GMTheChessPuzzler' covered 10 games: 10, 38, 47, 65, 88, 121, 128, 180, 187 and 201.

In round 5, STOCKFISH stepped up the pace again with two wins while ALLIESTEIN lost more ground to LEELA. SCORPIONN scored a notable win against the inconsistent STOOFVLEES in game 35.1/137 and was to repeat this feat in round 7. Round 6 was another bad one for the one-time mercurial but now struggling ETHEREAL: it lost not only to LEELA but also to the neighbouring FIRE. It was fortunate for KOMODO that there was another double round-robin to come as it was seventh at this point.

The last two rounds were again good for STOCKFISH with +3, despite the fact that it was surprisingly beaten in game 47.3/191 by KOMODO. The latter also lifted clear of relegation with wins against SCORPIONN and FIRE. ETHEREAL got even with FIRE which also lost to SCORPIONN, a result which confirmed its relegation. So, en fin, we had the first TCEC Superfinal between two ‘neural network’ engines, STOCKFISH with added NNUE, and LEELA, playing better but maybe not improved enough.

Table 6. The TCEC19 Premier League cross-table.

#	Engine	Elo	Pts	X	P%	SB	Elo Δ	St	Lc	AS	Sv	Ko	Sc	Fi	Et
01	Stockfish 202008260719_nn-82215d0fd0df	3553	34.5	0	96.11	927.00	+62		=====1=	=1=====	==1=====	=1==1=01	=====1=	=1=1=1==	=11=1=1=
02	LCZero v0.26.2-rc1_J92-100	3543	32.5	0	90.54	874.25	+26	=====0=			=====1	=1=====	1=1=1=====	=1=====	1=1=1=1=
03	AllieStein v0.8-120f959_net-15.0	3536	29.0	0	80.79	801.25	-66	=0=====				=====1	=====1	=====1	=====
04	Stoofvlees II a14	3504	27.0	0	75.21	754.75	-37	=0=====	=====0			=====1=10=====	=====0=0	=====1=	01=====
05	Komodo 2576.00	3505	26.5	0	73.82	736.50	-56	=0=0=10	=0	=0	0=01=====		=====1	=====1	=====
06	ScorpioNN 3.0.8.3	3451	25.5	0	71.04	714.75	+69	=====0=	0=0=0=	=0		=====1=1	=====0	=====0	=====
07	Fire 8_beta	3457	25.0	0	69.64	699.50	+36	=0=0=0=	=0	=0	=====0=	=====0	=====1		=====10=
08	Ethereal 12.43	3470	24.0	0	66.86	666.00	-34	=00=0=0=	0=0=0=0		10=====	=====	=====	=====01=	

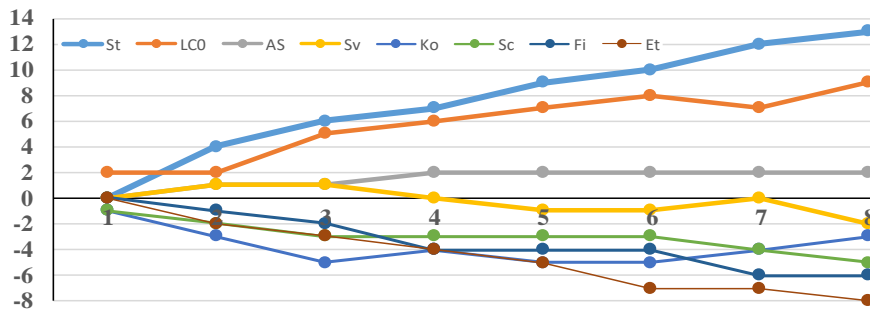


Fig. 3. The TCEC19 Premier League: net wins, round by round.

6 THE SUPERFINAL

Once again, STOCKFISH and LEELA CHESS ZERO faced off in the TCEC Superfinal, the fifth time since LEELA led the NN-engine charge up the rankings. As can be seen from Fig. 4, it was to be a match of two halves, tied after game 51 but with STOCKFISH edging ahead in game 52 and easing away (but not ‘warming up’) after a pause in the ‘60s to a +9 win. This result was almost exactly predicted in the pre-match poll: the chat room are a knowledgeable bunch!

Jeroen Noomen (2020) explained his approach to the openings. The tireless Wool (2020) provided notes on many of the games, going more deeply into all the decisive ones as listed in Table 7. ‘Kingscrusher’ (2020a-c) covered games 5 and 6. GM Matthew Sadler (2020), again delighted by the selection of openings, provided his own very personal reactions to 19 games⁴ of the match in a companion piece complementing this report. We are happy and thankful to be able to refer the reader to these various

⁴ Games 1, 2, 5, 6, 9, 18, 26, 33, 47, 48, 55, 60, 61, 67, 77, 78, 83, 89 and 92.

accounts, all of which add to our understanding of this match. Matthew majored particularly on games 18, 60, 78 and 92 for which we provide the ‘teaser’ evaluation curves in Figure 5. Game 78 took his ‘game of the Sufi’ prize so if you only have time to study one game in depth, this is the one: ‘awesome play on both side.’

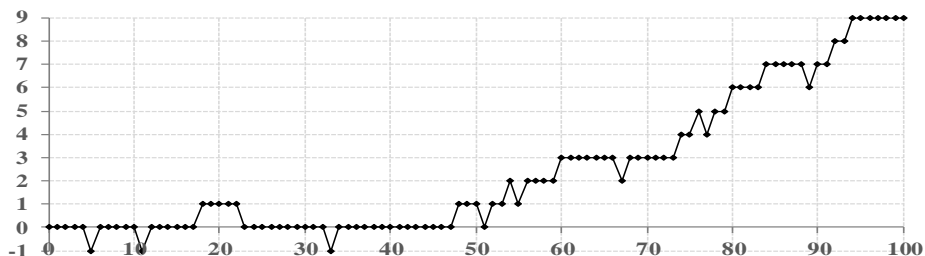


Fig. 4. The TCEC19 Superfinal: STOCKFISH’s net wins

Table 7. The TCEC19 Superfinal: score detail

	Engines	Elo	Pts.	Elo \pm	# wins	Wins in halved mini-matches	Wins in won mini-matches	
1	Stockfish 202009282242_nn-baeb9ef2d183	3564	54½	5	18: 8+10	06, 12, 34, 52, 56, 68, 78, 90	C11, A80, B48, B81, 76, 80, 84, 92, 94	B45, A50, E94, B05, D16, B12, B06, B48, C16, A80
2	LeelaChessZero v0.26.3-rc1_T60.SV.JH.92-190	3542	45½	-5	9: 8+1	05, 11, 33, 51, 55, 67, 77, 89	C30, B60, A34, A60	23 E15

In the spirit of ‘what happened next?’ we have selected five positions from these games, see Fig. 6. Clues, and sometimes the answers can be found in Matthew’s narrative but of course, the reader should ponder them first without, or with, engine assistance.

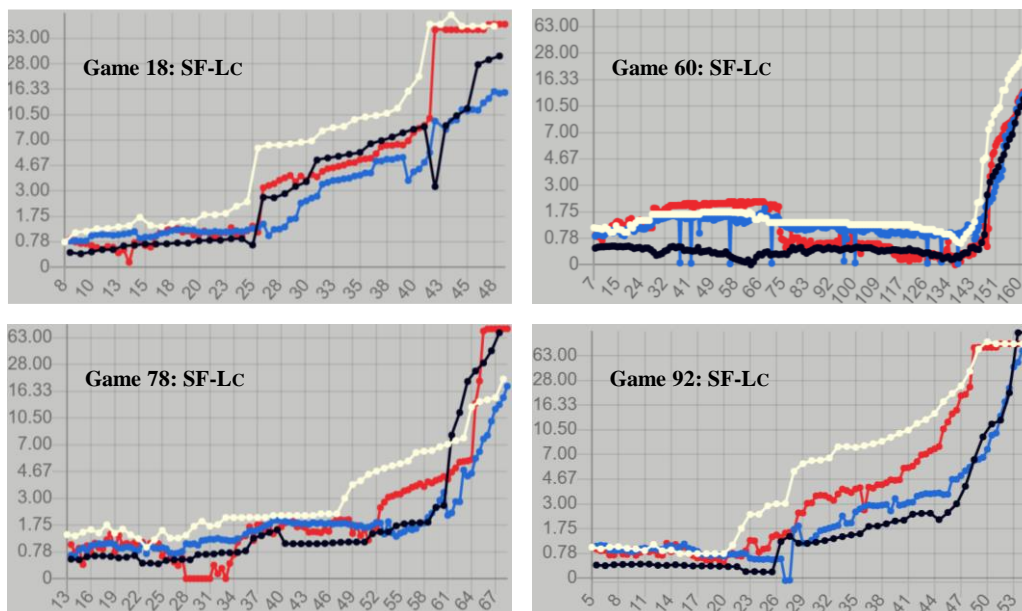


Fig. 5. Evaluations for Sufi games 18, 60, 78 and 92: ‘red’ = kibitzer CRYSTAL (CPW, 2020).

The underdog LEELA was given White first in each mini-match, an innovation to be applauded. Each time LEELA won, we wondered if STOCKFISH would bounce back. This happened on eight of nine occasions. Jeroen Noomen emphasises that ‘1-0/1-0’ openings are not busted but, taken across all TCEC matches, they certainly define their own category of ‘brave choices for Black’. It seems to be a combination of difficult and unnatural to find openings which give Black the advantage and there were no Black wins, let alone 2-0 scores. STOCKFISH won ten mini-matches to LEELA’s one, which speaks to at least its defensive capability. While the Superfinal may seem to have been ‘one way’, only five Elo points were exchanged between the engines after all was done.



Fig. 6. (a) Game 18, position 26w; (b) g60 p150w; g78 (c) p27w and (d) p63w; g92 p22w.

7 IN CONCLUSION

So STOCKFISH became the TCEC Grand Champion for the ninth time: many congratulations to its developers and connections on this result, particularly for the NNUE development and decision.

For those who mourned the passing of ‘Shannon STOCKFISH’, TCEC generously provided three ‘Superfinal Bonus’ games. These were between STOCKFISH 202007311012, the most recent non-NN version, and KOMODO, STOCKFISHNN and LEELA CHESS ZERO, all slightly different (a pity) from their Premier Division and Superfinal versions. The results with ‘STCLASSIC’ first, were 69-31 against KOMODO (no surprise), 39-61 against STOCKFISHNN and 41-59 against LEELA. These last two results indicate that the STOCKFISH move to NNUE was not only a no-brainer but that it was also ‘just in time’. LEELA could have beaten STCLASSIC in the Superfinal even more heavily than STOCKFISHNN beat LEELA.

Clearly then, STOCKFISH and LEELA CHESS ZERO have moved up the Elo scale again, distancing the rest of the field and particularly the Shannon-AB engines in the Premier Division. Further innovations will open or close that gap: we have only seen ‘version 1’ of the integration of ‘Shannon’ and ‘NN’ ideas in STOCKFISH. NNUE technology is available to all and presumably allowed by TCEC in all engines. Will NNUE also find its way into Chessbase’s seasonal offerings? At the time of writing, Christmas is coming even if the Covid cloud still hangs over us.

As the engines move inexorably onward and upward, the gap widens ever more between their and we onlookers’ level of understanding. In this context, GM Matthew Sadler’s (2019, 2020) commentaries are welcome, particularly as they are so accessible and readable in their own right. Long may they continue. Is there also an opportunity here for engines and/or computer graphics to help our understanding here? DeepMind (Moxie Pictures, 2017) clearly had some sophisticated graphics to help them understand ALPHAGO’s confidence levels about various aspects of the positions.

The ICGA’s prize for an annotation engine was never awarded but should now perhaps be relaunched. NN-engines are now both superhuman and fallible in some non-game domains so we need to know

more of when they succeed and when they fail. Isaac Asimov’s (1942) First Law of Robotics is “A robot may not injure a human being or, through inaction, allow a human being to come to harm.” Written at a time when neural networks were not even on the horizon, it perhaps needs to be rewritten. Discuss!

Once again, we congratulate all participants whether engine authors, trainers or fans, TCEC subscribers and supporters, authors of opening books or chat room entertainers. ‘noobpwnftw’ gets our particular thanks as the principle sponsor of TCEC. He has made major contributions to the progress of computer chess through the provision of the TCEC platform and in the endgame field (de Man et al, 2018).

Haworth and Hernandez (2020b) provides not only the games of the TCEC19 event but also the games of the three Sufi bonus matches. We feel that these are valuable context and of historical value. All decisive games have been played out by the first author’s FRITZ17 at search-depth 24 ply for the benefit of beginners. Tables 8 and 9 below provide the usual cross-event statistics.

Table 8. Generic statistics for each phase of TCEC19: results, terminations and average game-length.

TCEC 19		Qualification		League 3		League 2		League 1		Division P		Superfinal		Overall	
		#	%	#	%	#	%	#	%	#	%	#	%	#	%
Results	# games	132		90		90		90		224		100		726	
	Draws	63	47.7	59	65.6	46	51.1	64	71.1	183	81.7	73	73.0	488	67.2
	Wins	69	52.3	31	34.4	44	48.9	26	28.9	41	18.3	27	27.0	238	32.8
	1-0	38	28.8	22	24.4	29	32.2	23	25.6	36	16.1	27	27.0	175	24.1
	0-1	31	23.5	9	10.0	15	16.7	3	3.3	5	2.2	0	0.0	63	8.7
	White performance	69.5	52.7	51.5	57.2	52.0	57.8	55.0	61.1	127.5	56.9	63.5	63.5	419	57.7
	Black performance	62.5	47.3	38.5	42.8	38.0	42.2	35.0	38.9	96.5	43.1	36.5	36.5	307	42.3
	TCEC draw	31	23.5	29	32.2	26	28.9	39	43.3	116	51.8	62	62.0	303	41.7
	3x repetition	15	11.4	17	18.9	10	11.1	9	10.0	16	7.1	4	4.0	71	9.8
	50-move rule	0	0.0	0	0.0	0	0.0	0	0.0	0	0.0	0	0.0	0	0.0
Terminations	Stalemate	0	0.0	0	0.0	0	0.0	1	1.1	0	0.0	0	0.0	1	0.1
	EGT adj., 'draw'	17	12.9	13	14.4	10	11.1	15	16.7	51	22.8	7	7.0	113	15.6
	EGT adjudication	37	28.0	19	21.1	13	14.4	19	21.1	55	24.6	8	8.0	151	20.8
	TCEC win	39	29.5	25	27.8	40	44.4	20	22.2	31	13.8	26	26.0	181	24.9
	EGT adj., 'win'	20	15.2	6	6.7	3	3.3	4	4.4	4	1.8	1	1.0	38	5.2
	Tech. default	0	0.0	0	0.0	1	1.1	0	0.0	0	0.0	0	0.0	1	0.1
	Manual adj.	0	0.0	0	0.0	0	0.0	0	0.0	0	0.0	0	0.0	0	0.0
	Mate	10	7.6	0	0.0	0	0.0	2	2.2	6	2.7	0	0.0	18	2.5
	Loss on time	0	0.0	0	0.0	0	0.0	0	0.0	0	0.0	0	0.0	0	0.0
	Resignation	0	0.0	0	0.0	0	0.0	0	0.0	0	0.0	0	0.0	0	0.0
Length	Moves	69.3		59.7		63.9		60.9		67.0		69.1		65.7	
	Time-budget (h)	1.19		1.17		1.18		1.67		3.37		4.38		2.359	
	Clock-time used (h)	1.08	90.4	0.99	84.8	1.02	86.8	1.39	83.6	2.85	84.5	3.75	85.6	2.01	85.4
	C-time not used (h)	0.11	9.6	0.18	15.2	0.16	13.2	0.27	16.4	0.52	15.5	0.63	14.4	0.34	14.6

Table 9. The shortest and longest 1-0, drawn and 0-1 games in each phase of TCEC19.

Div.	1-0						$\frac{1}{2}$ - $\frac{1}{2}$						0-1					
	Shortest			Longest			Shortest			Longest			Shortest		Longest			
	Game	#mv		Game	#mv		Game	#mv		Game	#mv		Game	#mv	Game	#mv		
Q	23/4.5	Sl-Rc	32	76/13.4	Rc-Tu	125	20/4.2	Ba-Cm	19	84/14.6	At-Cm	232	78/13.6	c22-Sl	22	9/2.3	Ba-Fa	103
3	89/18.4	Ig-Co	36	88/18.3	Mi-Pi	127	41/9.1	Ma-Rc	12	52/11.2	Ma-Pi	129	13/3.3	iC-Sl	50	86/18.1	Rc-Ma	108
2	72/15.2	Va-Ch	36	73/15.3	Ru-Ig	111	44/9.4	Dm-Ne	28	57/12.2	Ig-Sl	196	5/1.5	Wa-Ru	36	74/15.4	Wa-Ne	99
1	79/16.4	Fi-Ar	34	75/17.5	Fr-De	140	77/16.2	De-Xi	19	81/17.1	Sl-Ru	161	83/17.3	Ar-ro	51	61/13.1	Ar-Ru	70
P	221/56.1	Sc-Sv	34	58/15.2	Lc-Fi	172	90/23.2	Sv-Et	13	203/51.3	AS-Fi	274	137/35.1	Sv-Sc	58	45/12.1	Sc-AS	102
SF	56	SF-Lc	50	33	Lc-SF	193	1	Lc-SF	35	10	SF-Lc	213	—	—	—	—	—	—
O'all	Q, 23	Sl-Rc	32	SF, 33	Lc-SF	193	3, 41	Ma-Rc	12	P, 203	AS-Fi	274	Q, 78	c22-Sl	22	3, 86	Rc-Ma	108

REFERENCES

- Asimov, I. (1942). *Runaround*. Included in *I, Robot* (1950), Gnome Press.
- CCRL (2020). <https://crl.chessdom.com/crl/4040>. CCRL's 40/15 engine-rating list.
- Cong, V. C. (2020). <https://github.com/ynasu87/nnue>. NNUE Github site.
- CPW (2020). <https://tinyurl.com/icga046>. Biographies of chess engines, authors and developers.
- de Man, R., Fiekas, N. and Guo, B. (2018). <https://tinyurl.com/icga007>. Fiekas' interface to 'Syzygy formatted' de Man sub-7-man and Guo 7-man DTZ₅₀" EGTs.
- Dvoretsky (2020). *Dvoretsky's Endgame Manual*. Edition 5, revised by K. Müller. Russell Enterprises.
- 'GMTheChessPuzzler' (2020). <https://tinyurl.com/icga080>. A TCEC19 playlist.
- Haworth, G. M^cC and Hernandez, N. (2020a). The 18th TCEC event: TCEC 18. *ICGA Journal*, 42(2-3), 211-222. <http://centaur.reading.ac.uk/91839/> adds pgn files and further data.
- Haworth, G. M^cC and Hernandez, N. (2020b). The 19th TCEC event: TCEC 19. This report. *ICGA Journal*, 42(4), \$\$-\$\$\$. <http://centaur.reading.ac.uk/93815/> adds pgn files and further data.
- Intel (2016). <https://tinyurl.com/icga059>. Intel's specification of the XEON® E5-4669v4 processor.
- 'Kingscrusher' (2020a). <https://tinyurl.com/icga074>. Covers some TCEC19 LEELA games.
- 'Kingscrusher' (2020b). <https://tinyurl.com/icga077>. Covers some TCEC19 STOCKFISH games.
- 'Kingscrusher' (2020c). <https://tinyurl.com/icga079>. Covers some other TCEC19 games.
- Moxie Pictures (2017). *AlphaGo, The Movie*. Dir., G. Kohs. See especially 37', 47', 51' et al.
- Müller, K. (2020). Personal correspondence.
- Müller, K. and Konoval, Y. (2018s). *Understanding Minor Piece Endgames*. Russell Enterprises. See also <http://centaur.reading.ac.uk/82423/>.
- Noomen, J. (2020). <https://tinyurl.com/tcec002>. On the TCEC19 Superfinal openings.
- Nvidia (2019). <https://www.nvidia.com/en-us/data-center/v100/>. Nvidia's V100 specification.
- Romero, P.P. (2012). <https://tinyurl.com/icga013>. FINALGEN: Tutorial, download and forum.
- Sadler, M. (2020). The TCEC19 Computer Chess Superfinal: a Perspective. *ICGA Journal*, v42(4).
- Sadler, M. and Regan, N. (2019). *Game Changer: AlphaZero's Groundbreaking Chess Strategies and the Promise of AI*. New in Chess. ECF 2019 Book of the Year; winner of FIDE's 2019 Averbakh-Boleslavsky Award. See also <https://www.youtube.com/watch?v=FW-hDMbZHAY>.
- TCEC (2020a). <https://tcec-chess.com/>. The TCEC site for current and archived events.
- TCEC (2020b). https://en.wikipedia.org/wiki/TCEC_Season_19. Another report on TCEC19.
- 'Wool, A.' (2020) <http://mytcecxperience.blogspot.co.uk/>. AW's 'TCEC Experience' blog.